



# ICD-10-PCS Update 2006 Version

---

Coordination & Maintenance  
Committee Meeting

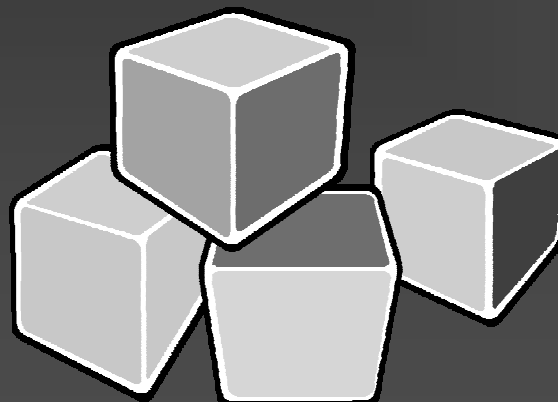
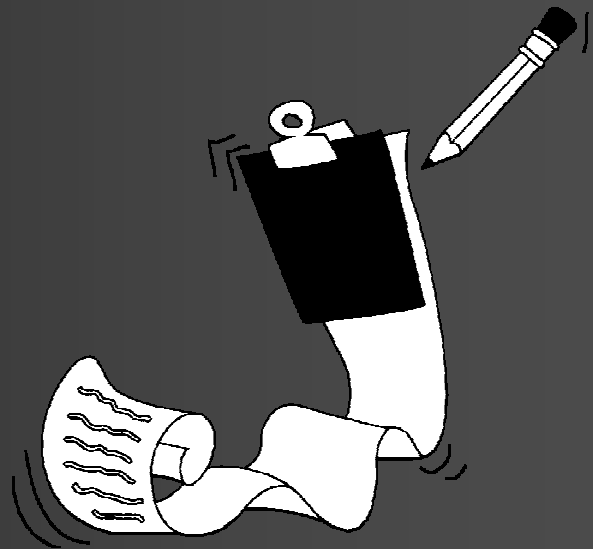
March 23, 2006

CMS Headquarters—Baltimore

# System Structure

- Most coding systems

- ICD-10-PCS



# ICD-10-PCS Structure: Characters and Values

- A character is a stable, standardized code component
  - Holds a fixed place in the code
  - Retains its meaning across a range of codes
- A value is an individual unit defined for each character

|         |                |                   |              |          |        |           |
|---------|----------------|-------------------|--------------|----------|--------|-----------|
| Section | Body<br>System | Root<br>Operation | Body<br>Part | Approach | Device | Qualifier |
|---------|----------------|-------------------|--------------|----------|--------|-----------|

**0: MEDICAL AND SURGICAL**

**D: GASTROINTESTINAL**

**B: EXCISION:** Cutting out or off, without replacement, a portion of a body part

| Body Part<br>Character 4  | Approach<br>Character 5  | Device<br>Character 6 | Qualifier<br>Character 7       |
|---|--|-----------------------|--------------------------------|
| 1 Esophagus, Upper<br>2 Esophagus, Middle<br>3 Esophagus, Lower<br>4 Esophagogastric<br>Junction<br>6 Stomach<br>7 Stomach, Pylorus<br>9 Duodenum<br>A Jejunum<br>B Ileum<br>C Ileocecal Valve<br>H Cecum<br>J Appendix<br>K Ascending Colon<br>L Transverse Colon<br>M Descending Colon<br>N Sigmoid Colon<br>P Rectum | 0 Open<br>2 Open Endoscopic<br>3 Percutaneous<br>4 Percutaneous Endoscopic<br>7 Via Natural or Artificial Opening<br>8 Via Natural or Artificial<br>Opening Endoscopic | Z No Device           | X Diagnostic<br>Z No Qualifier |

# ICD-10-PCS Tables

- Heading—values for 1<sup>st</sup>-3<sup>rd</sup> characters
- Columns—values for 4<sup>th</sup>-7<sup>th</sup> characters
- Valid codes built from single table row

| <b>0: MEDICAL AND SURGICAL</b><br><b>D: GASTROINTESTINAL</b><br><b>B: EXCISION:</b> Cutting out or off, without replacement, a portion of a body part |  |                       |                                |
|---|--|-----------------------|--------------------------------|
| Body Part<br>Character 4  | Approach<br>Character 5  | Device<br>Character 6 | Qualifier<br>Character 7       |
| 6 Stomach<br>7 Stomach, Pylorus<br>9 Duodenum<br>A Jejunum<br>B Ileum<br>C Ileocecal Valve  | 0 Open<br>2 Open Endoscopic<br>3 Percutaneous<br>4 Percutaneous Endoscopic | Z None                | X Diagnostic<br>Z No Qualifier |

# PCS Tables

## Easily Updated

- When medical practice changes
- Add the applicable new value to create a unique procedure description

| <b>0: MEDICAL AND SURGICAL</b><br><b>D: GASTROINTESTINAL</b><br><b>B: EXCISION:</b> Cutting out or off, without replacement, a portion of a body part |  |                       |                                |
|---|--|-----------------------|--------------------------------|
| Body Part<br>Character 4  | Approach<br>Character 5  | Device<br>Character 6 | Qualifier<br>Character 7       |
| 6 Stomach<br>7 Stomach, Pylorus<br>9 Duodenum<br>A Jejunum<br>B Ileum   | 0 Open<br>3 Percutaneous<br>4 Percutaneous Endoscopic<br><br>8 Via Natural or Artificial Opening<br>Endoscopic | Z None                | X Diagnostic<br>Z No Qualifier |

# 2006 Release: What's New

**ICD-10-PCS 2006 Version**  
*What's New in this Release*

**ICD-10-PCS Code Set Changes**

- Number of codes reduced—*Highlights*
  - Med/Surg # of approaches reduced from 15 to 7
  - Med/Surg application of approaches and devices more selective
  - Med/Surg root operations Change, Removal and Revision streamlined
  - Ancillary sections detail streamlined to level appropriate for inpatient coding
- Added specificity for devices and substances (e.g., hip replacement bearing surface, high and low-dose interleukin 2)

|  | 2005                   | 2006          |
|--|------------------------|---------------|
| Medical and Surgical Section (Section 0)             | 146,144                | 78,254        |
| Medical and Surgical-related Sections (Sections 1-9) | 4,375                  | 3,223         |
| Ancillary Sections (Sections B-D, F-H)               | 9,986                  | 6,218         |
|  | (333,106) <sup>1</sup> |               |
| <b>Total</b>   | <b>160,505</b>         | <b>87,695</b> |

# Streamlining ICD-10-PCS

---

- For inpatient facility reporting
- To reflect practical level of specificity
- For ease of implementation

# Streamlining Med/Surg and Related Sections

---

- Total # of approach values reduced
  - From 15 to 7
- Application of approaches more selective
- Body-part selections consolidated in Change, Removal and Revision

# Streamlining Ancillary Sections

Scope determined by the Cooperating Parties

## ■ Imaging

- Specified to 4<sup>th</sup> character (body part)
- 5<sup>th</sup> character specifies basic contrast type
- 6<sup>th</sup> character specifies without contrast followed by contrast if needed

## ■ Nuclear Medicine

- Specified to 5<sup>th</sup> character (radionuclide)

## ■ Radiation Oncology

- Specified to 6<sup>th</sup> character (isotope)

# Other Changes

- Added specificity for devices and substances
  - Internal Fixation Device (monoplanar, ring, hybrid)
  - Monoclonal Antibody
- Med/Surg new/updated body-part values
  - Head and Facial Bones—Orbit, Right and Left
- New/Revised Draft Coding Guidelines
  - Coronary artery procedures
  - Procedures involving endoscopic assistance

# Streamlining ICD-10-PCS

| Section                | 2005                | 2006   |
|------------------------|---------------------|--------|
| Med/Surg (0)           | 146,144             | 78,254 |
| Med/Surg related (1-9) | 4,375               | 3,223  |
| Ancillary (B-D, C-F)   | 9,986<br>(333,106)* | 6,218  |
| Total                  | 160,505             | 87,695 |

# Streamlining ICD-10-PCS

| Section                | 2005   | 2006   |
|------------------------|--|--------|
| Med/Surg (0)           | <p>* In calculating the number of codes in ancillary sections B-D for 2005, it was assumed that the Identification Not Requested (INR) value would be used for hospital inpatient reporting. When all possible specific values are taken into account, the total number of codes in sections B-D is 333,106.</p> |        |
| Med/Surg related (1-9) |  |        |
| Ancillary (B-D, C-F)   | 9,986<br>(333,106)*  | 6,218  |
| Total                  | 160,505  | 87,695 |

# ICD-10-PCS and ICD-9-CM Maps

- ICD-10-PCS and ICD-9-CM are fundamentally different
- Basic maps provide equivalent code options
  - A tool for analyzing the differences
- Users can adapt the basic mappings for their own specific purposes
  - Reimbursement mapping
  - One-to-one “best” code mapping

# ICD-10-PCS → ICD-9-CM Map

- One-to-many
  - ICD-10-PCS code → ICD-9-CM code or codes
- Major differences
  - ICD-9-CM uses varying terminology for approach
  - ICD-9-CM contains diagnosis info

# ICD-9-CM → ICD-10-PCS Map

- One-to-many
  - ICD-9-CM code → ICD-10-PCS code or codes
- Code combination map file included
  - Some ICD-9-CM codes identify multiple procedures
- Major differences
  - PCS typically contains much more detail
  - PCS is designed with the capacity to identify all distinct procedures

# Plans for 2007 Update

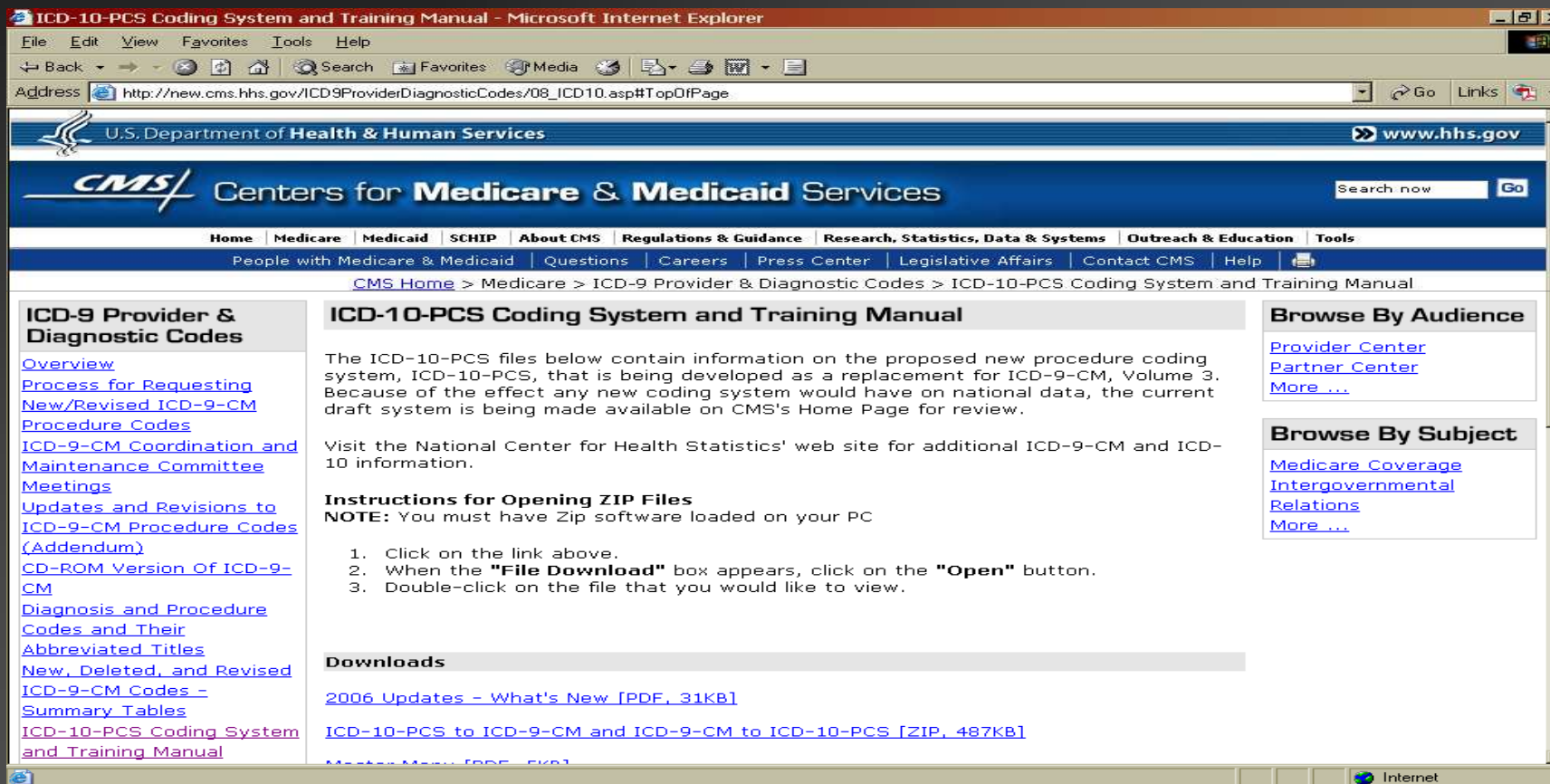
- Update ancillary sections to reflect new technology and substances
  - Imaging
  - Nuclear Medicine
  - Radiation Oncology
- Update system as needed to reflect industry developments
- Further refinement/streamlining in preparation for implementation
- Draft version of DRGs using ICD-10 codes

# ICD-10-PCS 2006 Version

- Currently available on the CMS website
  - ICD-10-PCS 2006 version
    - Tables
    - Index
    - Description Files
  - ICD-10-PCS to ICD-9-CM map
  - ICD-9-CM to ICD-10-PCS map
  - ICD-10-PCS Reference Manual

[http://new.cms.hhs.gov/ICD9ProviderDiagnosticCodes/08\\_ICD10.asp#TopOfPage](http://new.cms.hhs.gov/ICD9ProviderDiagnosticCodes/08_ICD10.asp#TopOfPage)

# CMS Website





# ICD-10-PCS Update 2006 Version

---

Coordination & Maintenance  
Committee Meeting

March 23, 2006

CMS Headquarters—Baltimore